



*Issaquah Alps*  
**TRAILS CLUB**

— EST. 1979 —

# State Route 18

## Project Briefing

# Project Overview



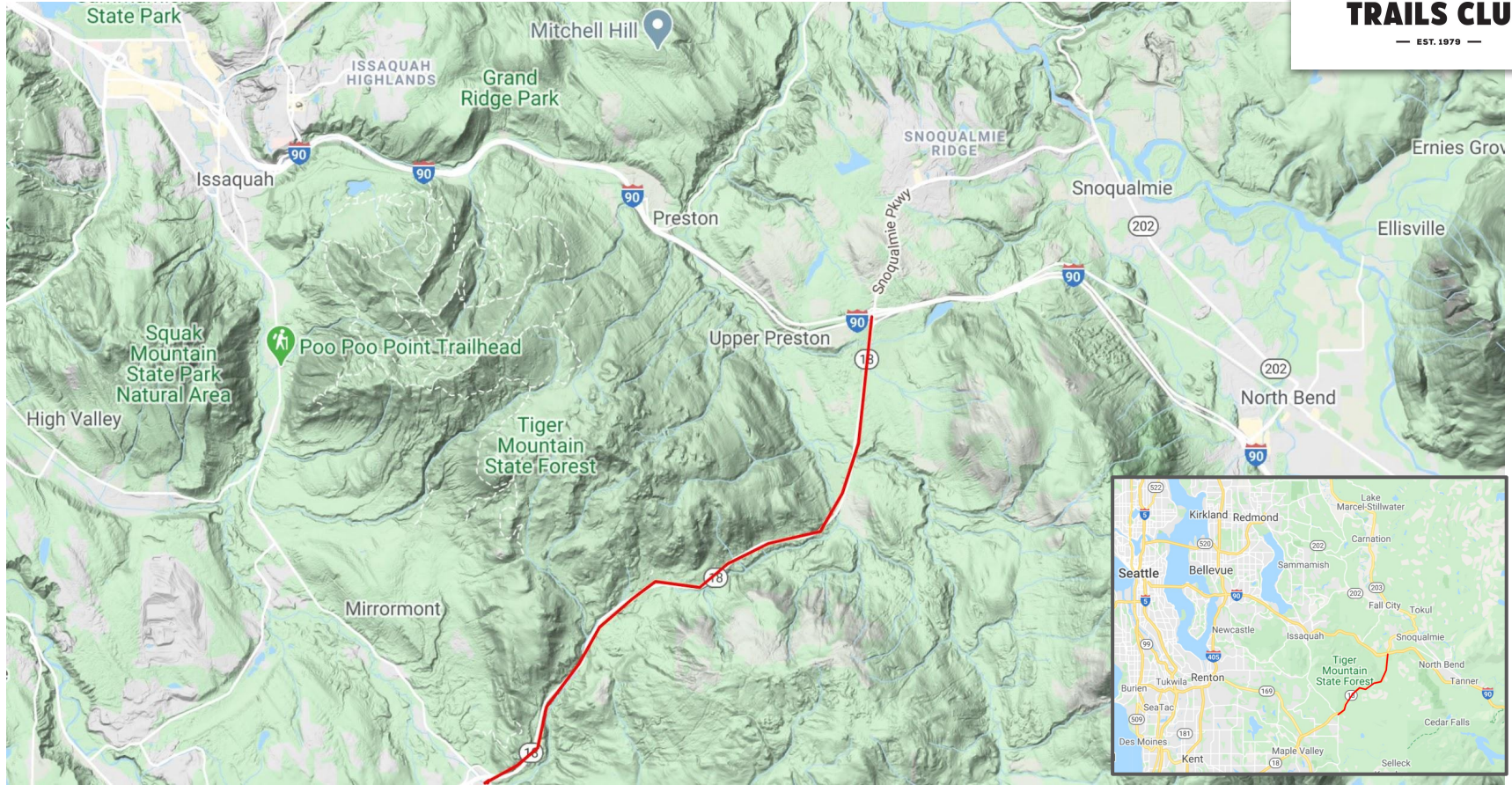
**Summary:** *State Route 18 is under development to help safely connect Maple Valley and the south sound with Snoqualmie and the I-90 corridor. This project is being completed in phases. The intentional redevelopment of this stretch of highway has the opportunity to connect and enhance the conservation work and recreation access that has been protected and invested in by the public.*

## Key Outcomes:

**Wildlife Connectivity should be an Engineering Criteria and Goal**

**Recreational Access should be an Engineering Criteria and Goal**

# Getting our Bearings



# Watershed Impact





**TRAILS CLUB**

— EST. 1979 —



SR 18 Widening | Issaquah-Hobart Road to Deep Creek



Tiger Mountain State Forest

Preston

Fall City

Mirrormont

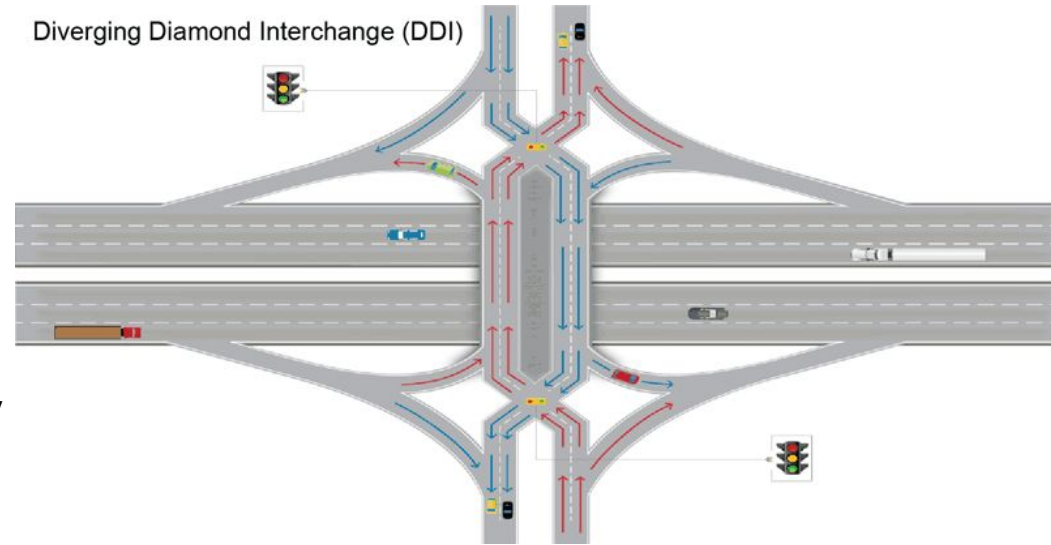
Phase 1

Phase 2

Issaquah-Hobart Road Southeast

# Phase 1: Timeline

- 2017: Design work initiated
- 2018: Jacobs (CH2MHill) selected
- 2018-2019: Community engagement, environmental and traffic analysis
- September 2019: diamond interchange
- December 2019: New auxiliary ramp
- 2021: Interchange construction tentatively scheduled to begin
- 2023: New interchange opens



# Phase 1: Timeline

## **Widening of 18**

1.5 miles of SR 18 to four lanes from Deep Creek (including over the raging river)

## **Weigh Station**

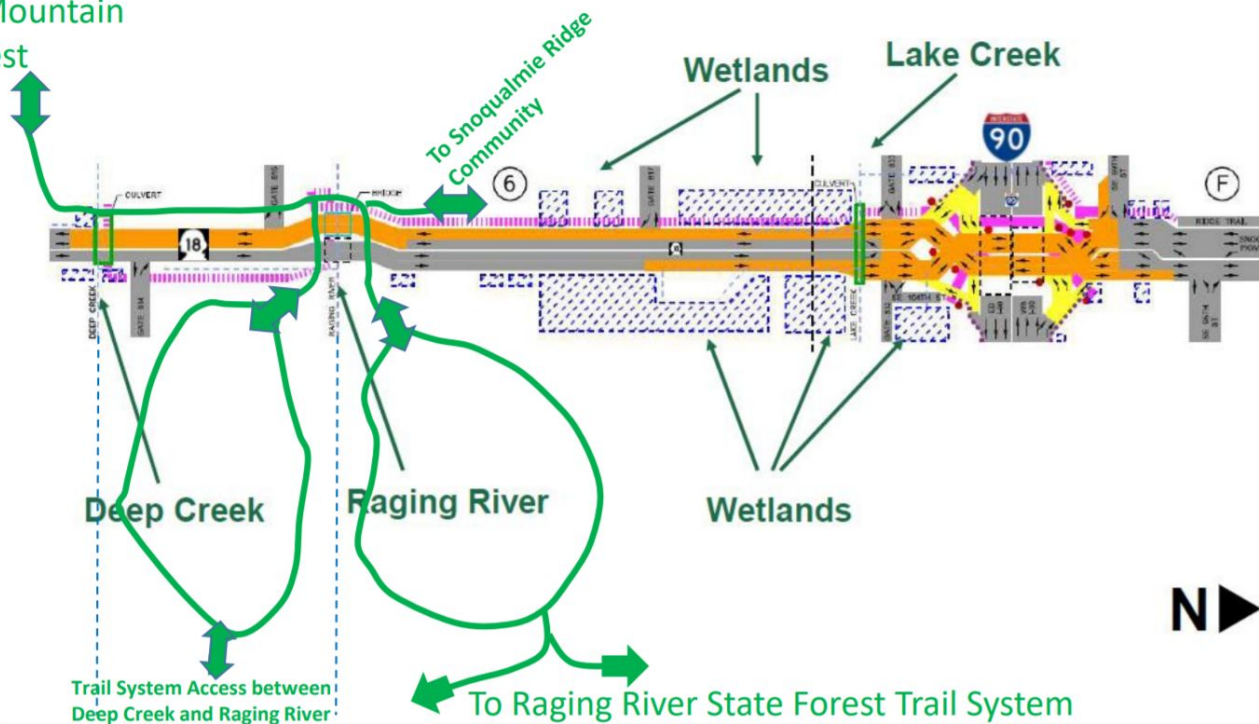
WSDOT is working with the Washington State Patrol to build a new “Port of Entry” weigh and inspection station on eastbound I-90 which will support weight and safety inspection of trucks headed east



# SR 18 widening baseline



To Tiger Mountain State Forest



To Snoqualmie Ridge Community

Wetlands

Lake Creek

Deep Creek

Raging River

Wetlands

Trail System Access between Deep Creek and Raging River

To Raging River State Forest Trail System





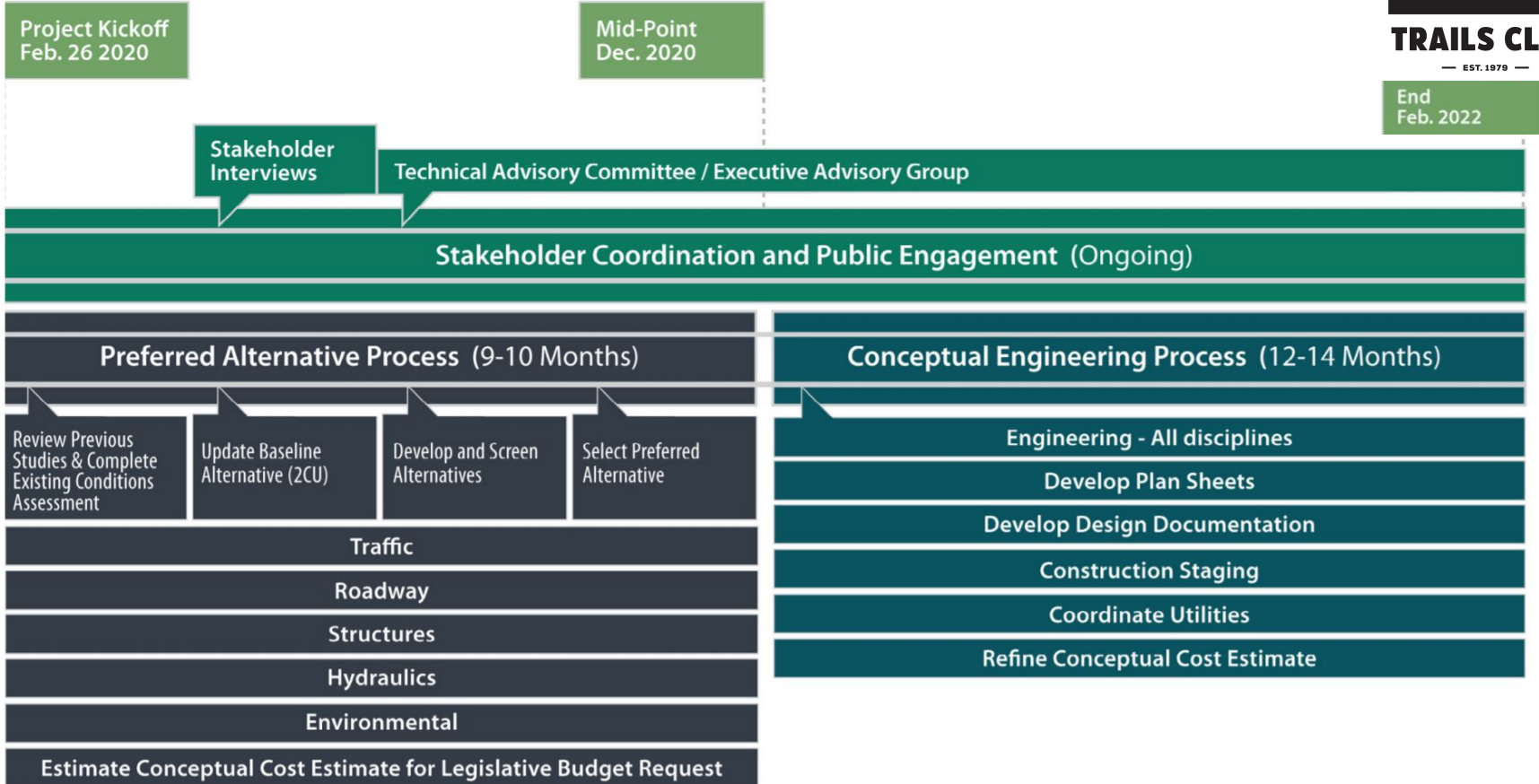
# Phase 2: WSDOT Project Planning Timeline



**TRAILS CLUB**

— EST. 1979 —

End  
Feb. 2022



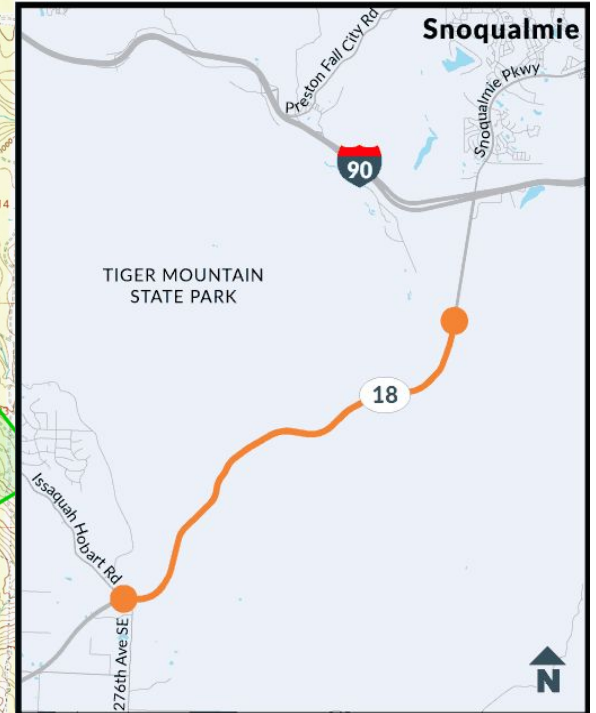
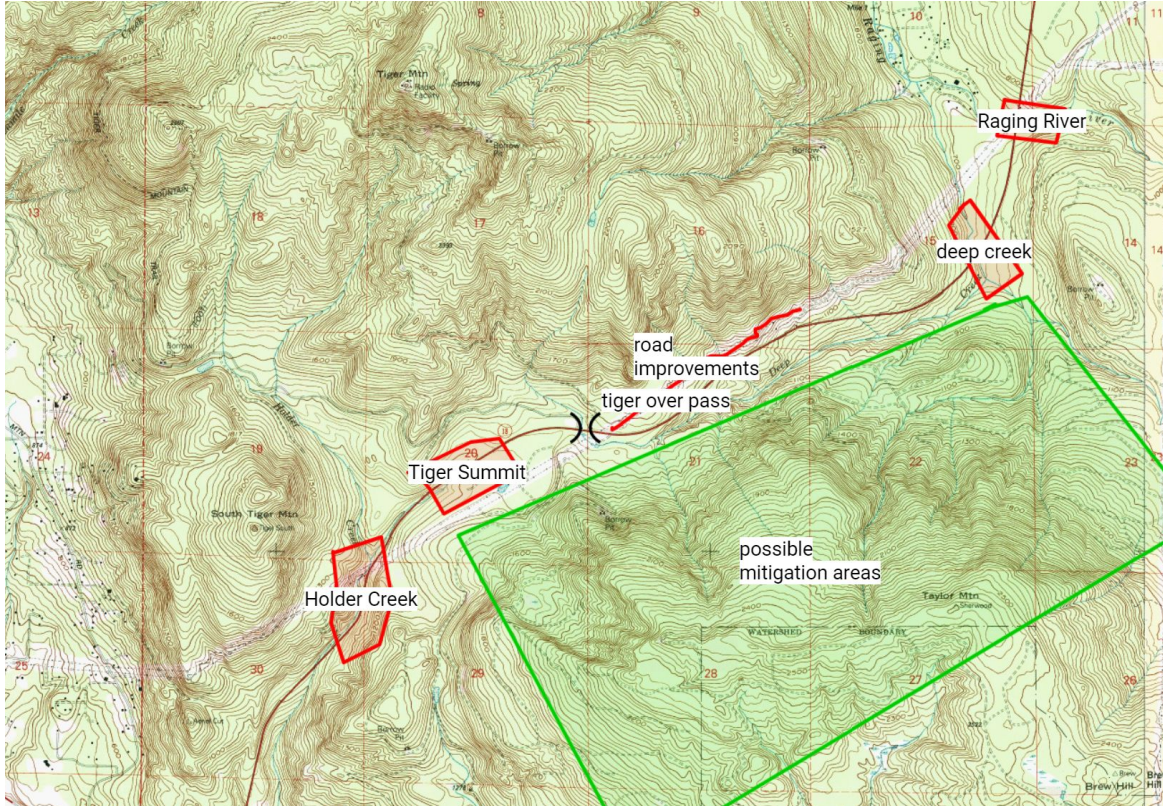
# Phase 2: Overview Map

Issaquah Alps

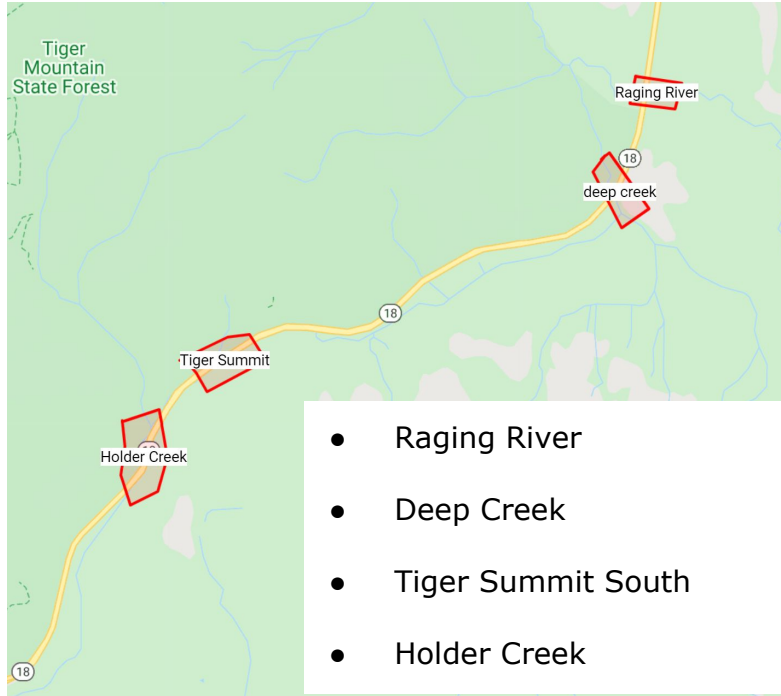


TRAILS CLUB

— EST. 1979 —



# Wildlife Connectivity: Salmon and Wildlife



# Safety: Services and Traffic



## Tiger Summit Interchange

- Provide safe access from north and south bound traffic - forest management and recreation
- Reduce truck traffic in Snoqualmie
- Provide recreation access on the east and west
- Ensure quick emergency vehicle access turning



# Safety: Continued

## Forest Practices:

Tiger Mountain and Taylor Mountain contain working forests. The land is owned and managed by the state and have active timber sales. The income from these sales supports public schools and recreation opportunities for the public.

- Evaluation of exit roads
- Interchange at Tiger Mountain summit



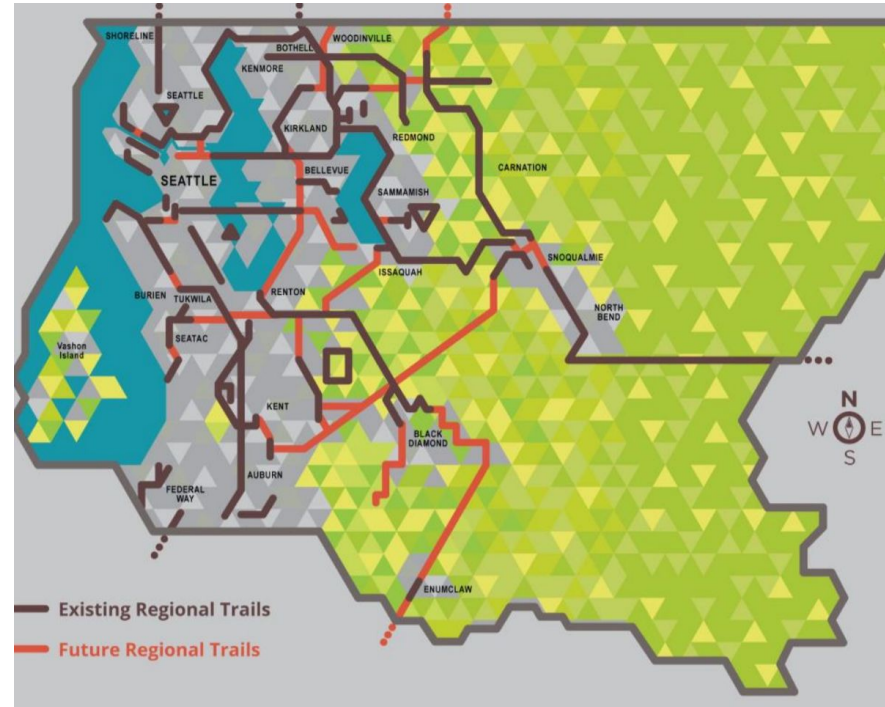
# Recreation: All Users

**Tiger Summit Trailhead:** Having fewer and better developed trailheads allows for a unique wilderness experience on Tiger Mountain. High point planning and redevelopment is underway. Tiger summit will need the same intentionality.

**Regional Trails:** SR-18 as a bike path/protected bike lanes has the ability to connect Maple Valley and south sound to the I-90 Snoqualmie corridor. This goal supports both green commuting and recreation.

## Multiple Users

- Hikers
- Runners
- Bikers
- Mountain Bikers
- Equestrians

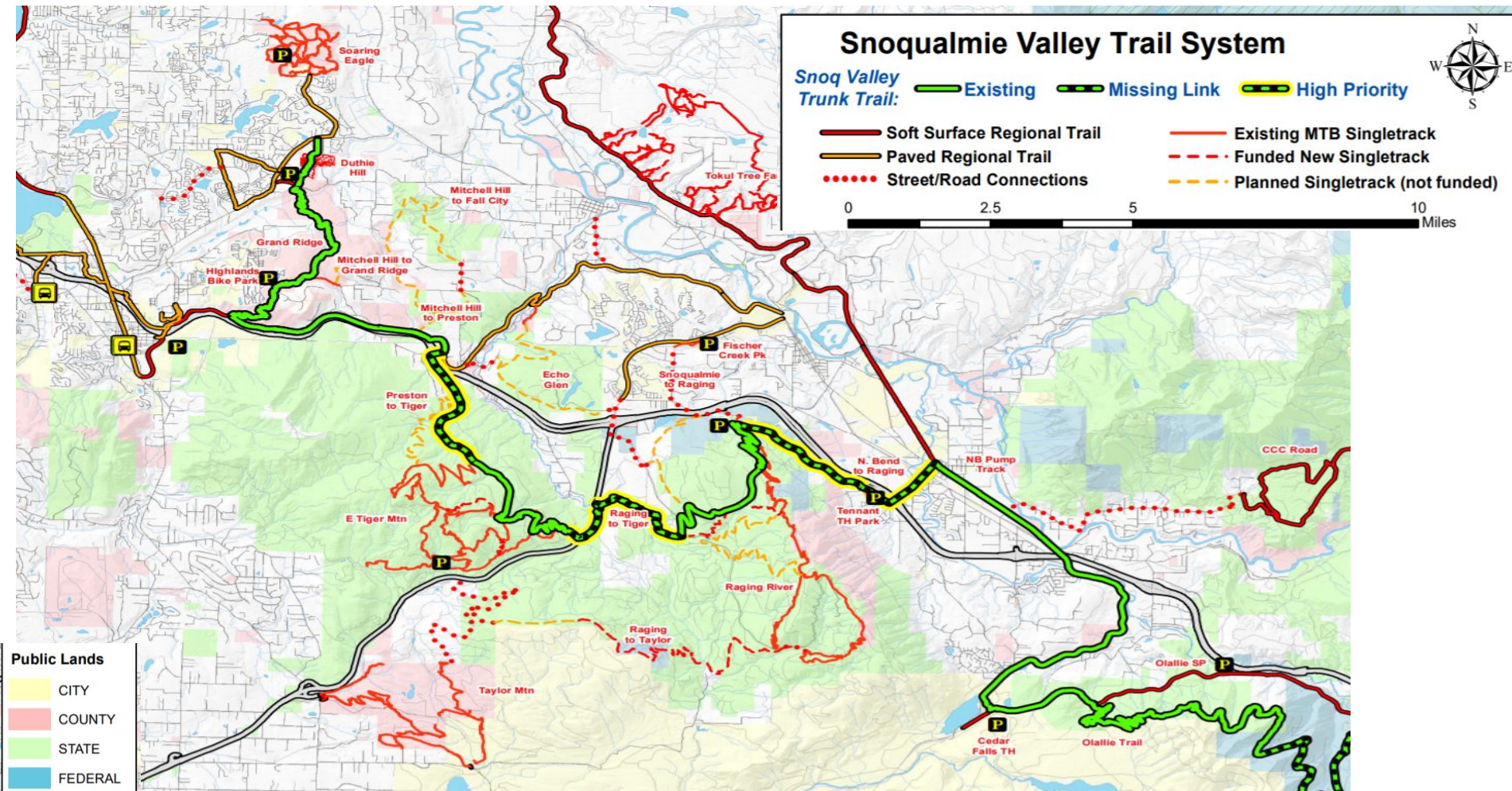
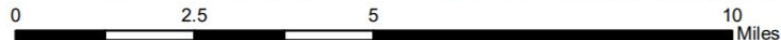


# Snoqualmie Valley Trail System

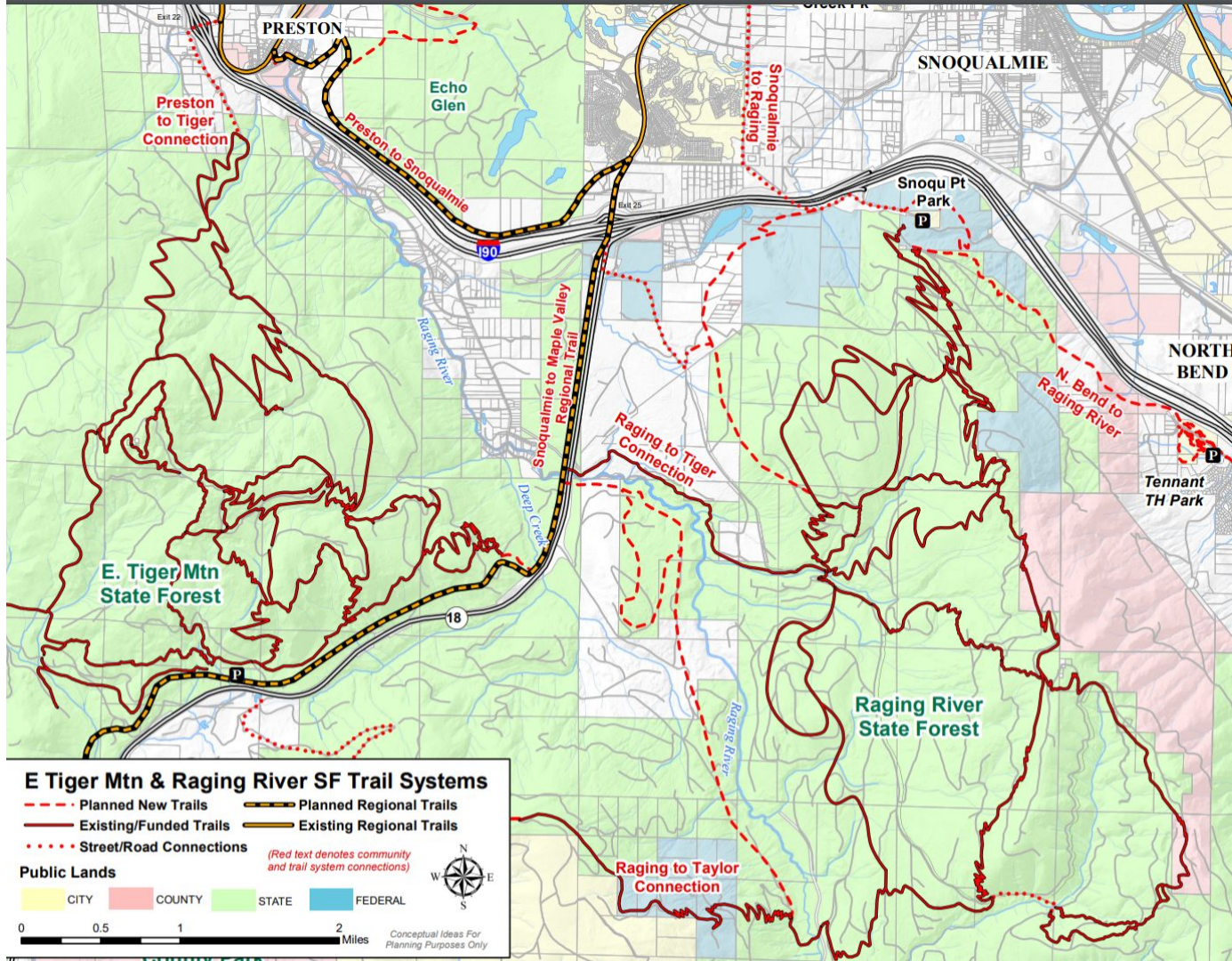
**Snoq Valley Trunk Trail:**

- Existing
- Missing Link
- High Priority

- Soft Surface Regional Trail
- Paved Regional Trail
- Street/Road Connections
- Existing MTB Singletrack
- Funded New Singletrack
- Planned Singletrack (not funded)



- Public Lands**
- CITY
  - COUNTY
  - STATE
  - FEDERAL



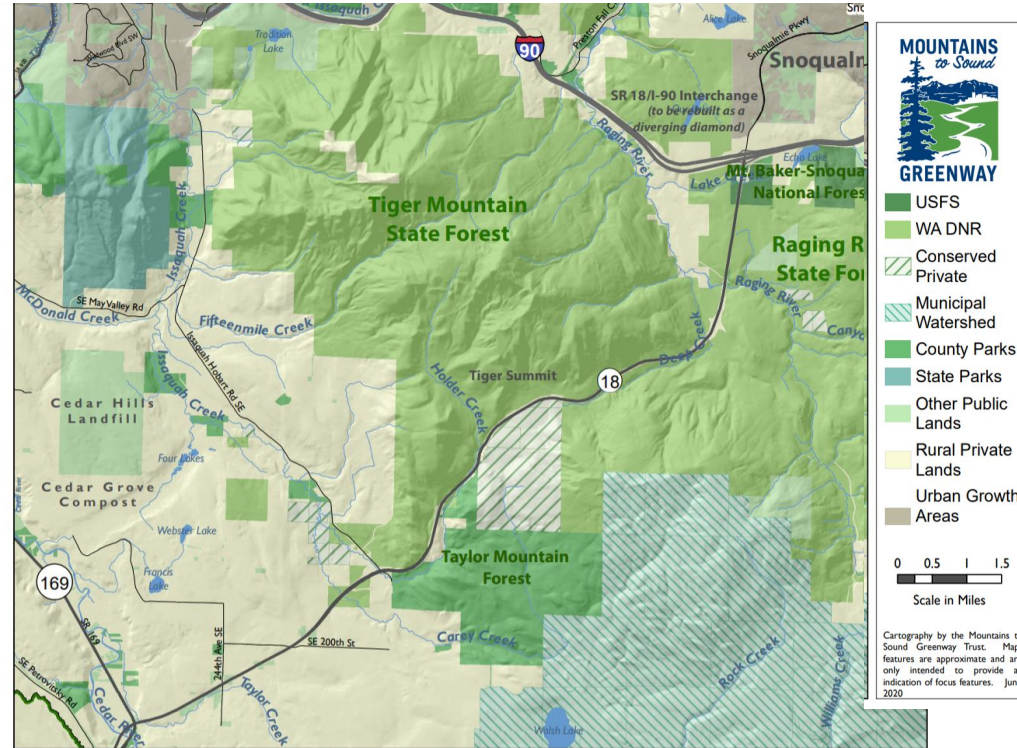


# Mitigation = New Public Lands



The Development of SR-18 will require mitigation and replacement of forest lands that will be removed for the new road way. It is our goal to aim this mitigation work towards the purchasing of additional public lands.

- Taylor Mountain
- Raging River Basin
- Echo Lake area



# IATC: Current Response



## Major Milestones

Summer 2019: Tour with Bill Ramos

September 2019: Mountains to Sound  
Greenway Trust Letter

May 2020: Stakeholder Interviews

June 2020: Advisory Board meetings  
begin

## Wildlife Connectivity

- Establish four critical wildlife connections
- Wildlife fencing with habitat enhancement
- Reduce human conflicts in these connections

## Safety

- Tiger Mountain Summit interchange
- Commuter bike safety
- Road 7000 (Eastside) connect to summit for safety

## Recreation

- Trailhead access (Tiger Mountain summit, Taylor Mountain, north location )
- Biking community corridor from Snoqualmie to Maple Valley

## Mitigation

- Forest land replacement for wetlands, streams and forest conversion to highway use

# Next Steps: Your Thoughts



Questions About the Project:

Next Steps: What you can do

- Engage community leaders
- Educate the public
- Collect stories about the project
- Collaborate with WSDOT



© Kirt Leonard